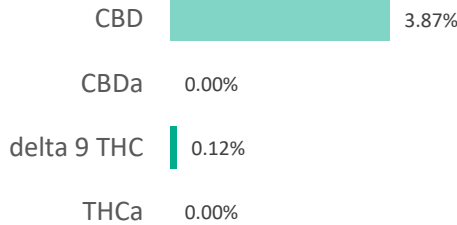
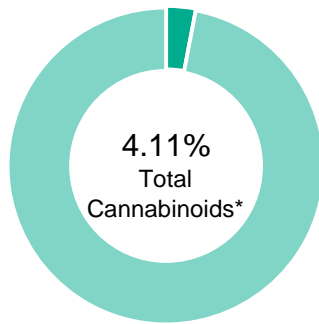


**CBD Banana Foster Tincture 1000mg/30ml**

<b>Batch ID:</b>	200107010	<b>Test ID:</b>	2084318.0013
<b>Reported:</b>	19-Dec-2019	<b>Method:</b>	TM14
<b>Type:</b>	Concentrate		
<b>Test:</b>	Potency		

**CANNABINOID PROFILE**


Compound	LOQ (%)	Result (%)	Result (mg/g)
Delta 9-Tetrahydrocannabinolic acid (THCA-A)	0.10	0.00	0.0
Delta 9-Tetrahydrocannabinol (Delta 9THC)	0.05	0.12	1.2
Cannabidiolic acid (CBDA)	0.07	0.00	0.0
Cannabidiol (CBD)	0.04	3.87	38.7
Delta 8-Tetrahydrocannabinol (Delta 8THC)	0.05	0.00	0.0
Cannabinolic Acid (CBNA)	0.13	0.00	0.0
Cannabinol (CBN)	0.06	0.00	0.0
Cannabigerolic acid (CBGA)	0.09	0.00	0.0
Cannabigerol (CBG)	0.05	0.00	0.0
Tetrahydrocannabivarinic Acid (THCVA)	0.08	0.00	0.0
Tetrahydrocannabivarin (THCV)	0.04	0.00	0.0
Cannabidivarinic Acid (CBDVA)	0.06	0.00	0.0
Cannabidivarin (CBDV)	0.03	0.00	0.0
Cannabichromenic Acid (CBCA)	0.07	0.00	0.0
Cannabichromene (CBC)	0.09	0.12	1.2
<b>Total Cannabinoids</b>		<b>4.11</b>	<b>41.10</b>
Total Potential THC**		0.12	1.20
Total Potential CBD**		3.87	38.70


**NOTES:**

N/A

% = % (w/w) = Percent (Weight of Analyte / Weight of Product)

\* Total Cannabinoids result reflects the absolute sum of all cannabinoids detected.

\*\* Total Potential THC/CBD is calculated using the following formulas to take into account the loss of a carboxyl group during decarboxylation step.

$$\text{Total THC} = \text{THC} + (\text{THCa} * (0.877)) \text{ and Total CBD} = \text{CBD} + (\text{CBDa} * (0.877))$$
**FINAL APPROVAL**


**Daniel Weidensaul**  
 19-Dec-2019  
 7:32 PM

PREPARED BY / DATE



**David Green**  
 19-Dec-2019  
 8:59 PM

APPROVED BY / DATE

Testing results are based solely upon the sample submitted to Botanacor Laboratories, LLC, in the condition it was received. Botanacor Laboratories, LLC warrants that all analytical work is conducted professionally in accordance with all applicable standard laboratory practices using validated methods. Data was generated using an unbroken chain of comparison to NIST traceable Reference Standards and Certified Reference Materials. This report may not be reproduced, except in full, without the written approval of Botanacor Laboratories, LLC. ISO/IEC 17025:2005 Accredited A2LA Certificate Number 4329.02



Certificate #4329.02

## CBD Banana Foster Tincture 1000mg/30ml

<b>Batch ID:</b>	200107010	<b>Test ID:</b>	9707868.011
<b>Reported:</b>	19-Dec-2019	<b>Method:</b>	Concentrate - Test Methods: TM05, TM06
<b>Type:</b>	Concentrate		
<b>Test:</b>	Microbial Contaminants		

## MICROBIAL CONTAMINANTS

Contaminant	Result (CFU/g)*
<b>Total Aerobic Count**</b>	None Detected
<b>Total Coliforms**</b>	None Detected
<b>Total Yeast and Molds**</b>	None Detected
<b>E. coli</b>	None Detected
<b>Salmonella</b>	None Detected

\* CFU/g = Colony Forming Unit per Gram

\*\* Values recorded in scientific notation, a common microbial practice of expressing numbers that are too large to be conveniently written in decimal form.

Examples:  $10^2 = 100$  CFU  
 $10^3 = 1,000$  CFU  
 $10^4 = 10,000$  CFU  
 $10^5 = 100,000$  CFU

## NOTES:

Free from visual mold, mildew, and foreign matter

TYM: None Detected

Total Aerobic: None Detected

Coliforms: None Detected

## FINAL APPROVAL

  
Mara Miller  
19-Dec-2019  
3:04 PM  
David Green  
19-Dec-2019  
3:24 PM

PREPARED BY / DATE

APPROVED BY / DATE

Testing results are based solely upon the sample submitted to Botanacor Services, LLC, in the condition it was received. Botanacor Services, LLC warrants that all analytical work is conducted professionally in accordance with all applicable standard laboratory practices using validated methods. Data was generated using an unbroken chain of comparison to NIST traceable Reference Standards and Certified Reference Materials. This report may not be reproduced, except in full, without the written approval of Botanacor Services, LLC.

## Product Specification

Banana Foster Hemp Tincture – 500mg/15ml, 1000mg/30ml, 2000mg/60ml

### Product Information

Product	Banana Foster Hemp Tincture
Botanical name	<i>Cannabis sativa</i> L.
Plant Part	Flower
Country of Origin	USA
Extraction Process	CO2 Extraction, Winterization
Ingredient Statement	Organic Fractionated Coconut Oil, CO2-Extracted Full Spectrum Hemp Oil, Organic Natural Flavors (Sunflower Oil, Natural Flavor)

### Organoleptic Description

Appearance	Light to dark amber oil liquid
Aroma	Typical
Taste	Characteristic

### Physical Characteristics

Cannabidiol Content (CBD):	>500mg/15ml, >1000mg/30ml, >2000mg/60ml
Tetrahydrocannabinol Content (THC):	<0.3%

### Shelf Life

Shelf life in original glass bottle for up to 1 year.

### Packaging

15ml, 30ml, and 60ml packaged in clear glass dropper bottles  
Secondary packaging in cardboard boxes.  
Larger quantities by arrangement

### Recommended Storage Conditions

Store at ambient conditions in airtight container.

### Kosher Certification

Banana Foster Hemp Tincture is certified Kosher by the Orthodox Union, UKD-ID: OUV3-84414EE

### GMP Certification

This product was produced in a cGMP Compliant Facility, audited through Eurofins, Certificate #4949.

I declare that the information given is believed to be correct as of date specified below.

Name: Alyssa Rosenblum

Title: Quality Manager

Date: January 7<sup>th</sup>, 2020